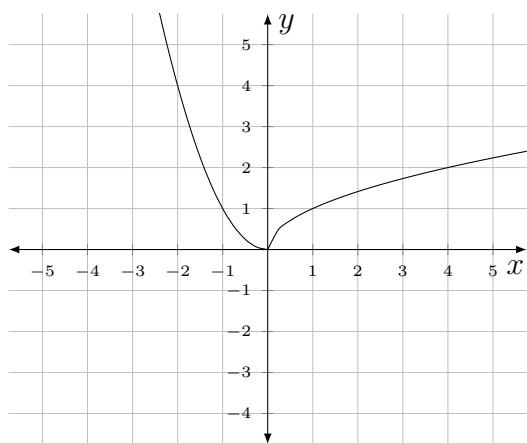


NAME: _____

Instructor Name: _____ Section: _____

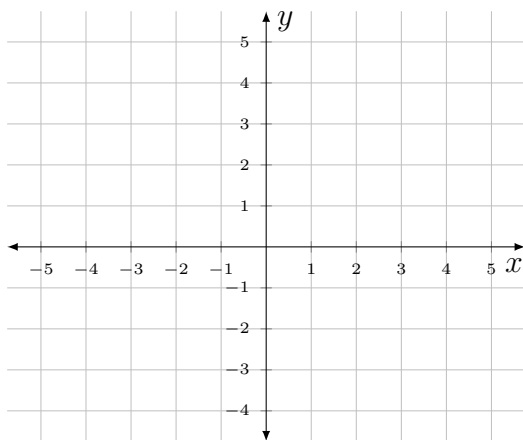
Please print this page and turn it in with your other 1.7 homework.

1. Below is the graph $y = f(x)$ for some function f . Use the points in the table at right to fill in the table with the corresponding transformed points, then use your points to sketch the graph of the function $g(x) = 2f(x - 1) - 3$.



x	$f(x)$
-1	1
0	0
1	1

$$g(x) = 2f(x - 1) - 3$$



x	$g(x)$